

QUESTIONS

RESPONSES

50

50 responses



Accepting responses

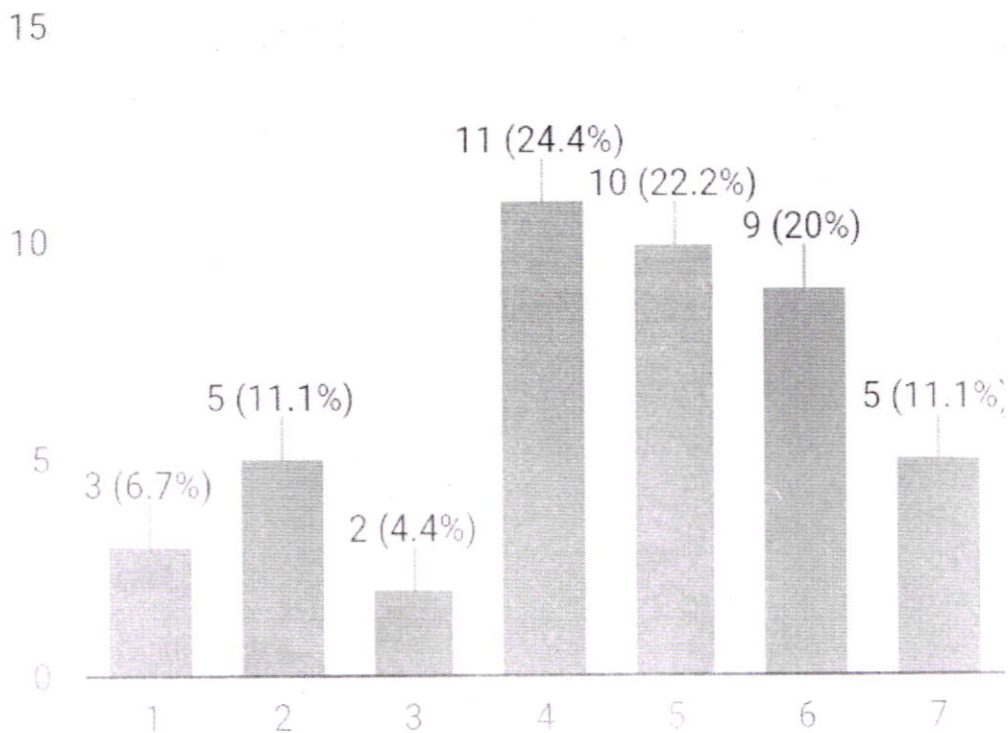


SUMMARY INDIVIDUAL

2018-19
BBA 5th sem

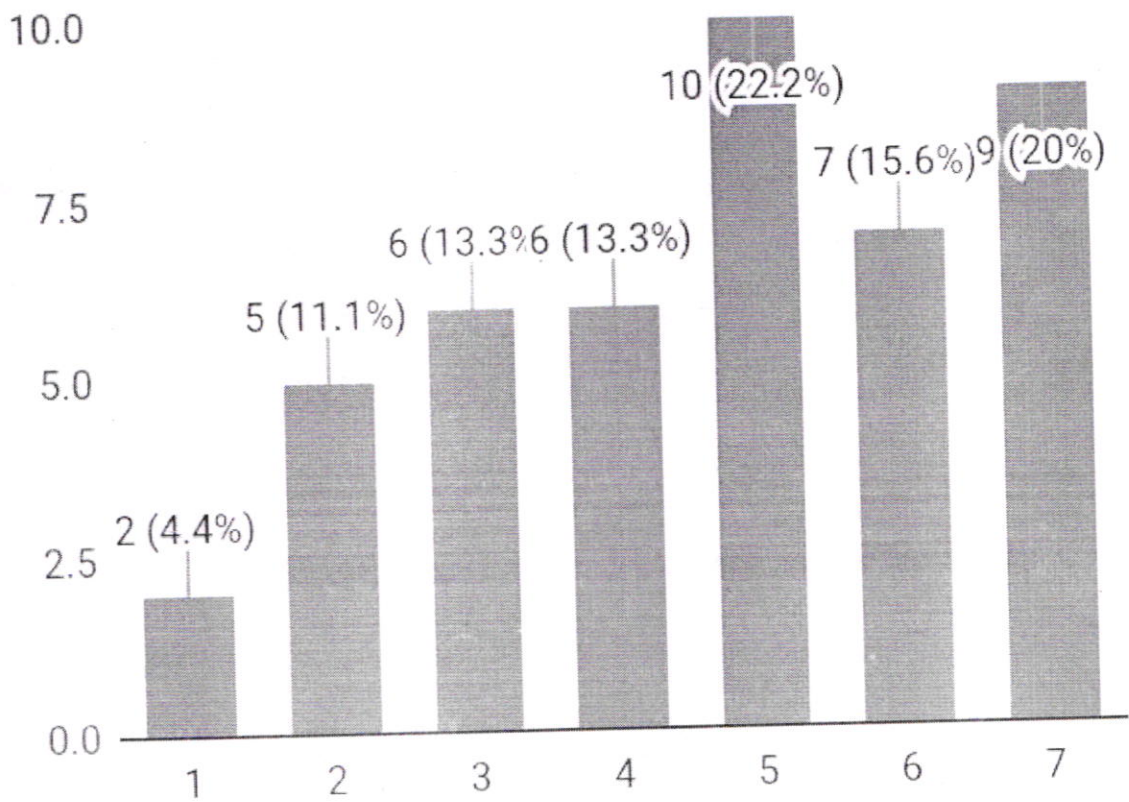
UNPLEASANT -----
PLEASANT

45 responses



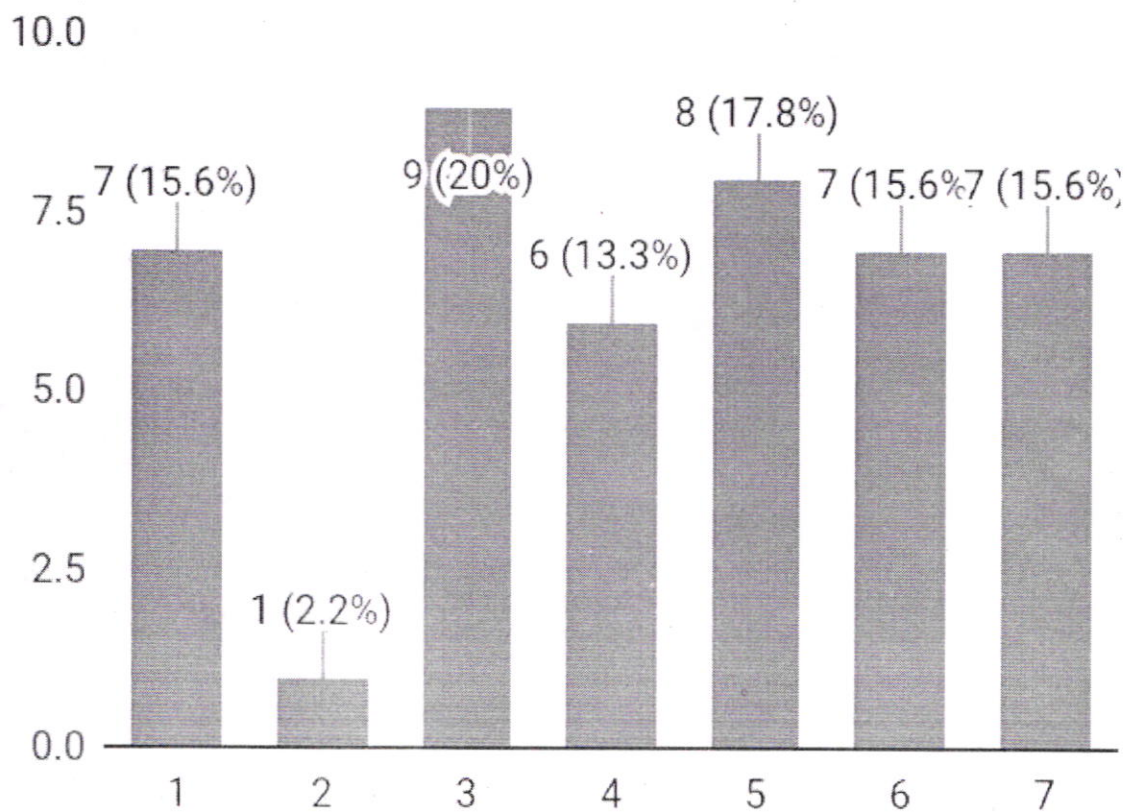
REJECTING ----- ACCEPTING

45 responses



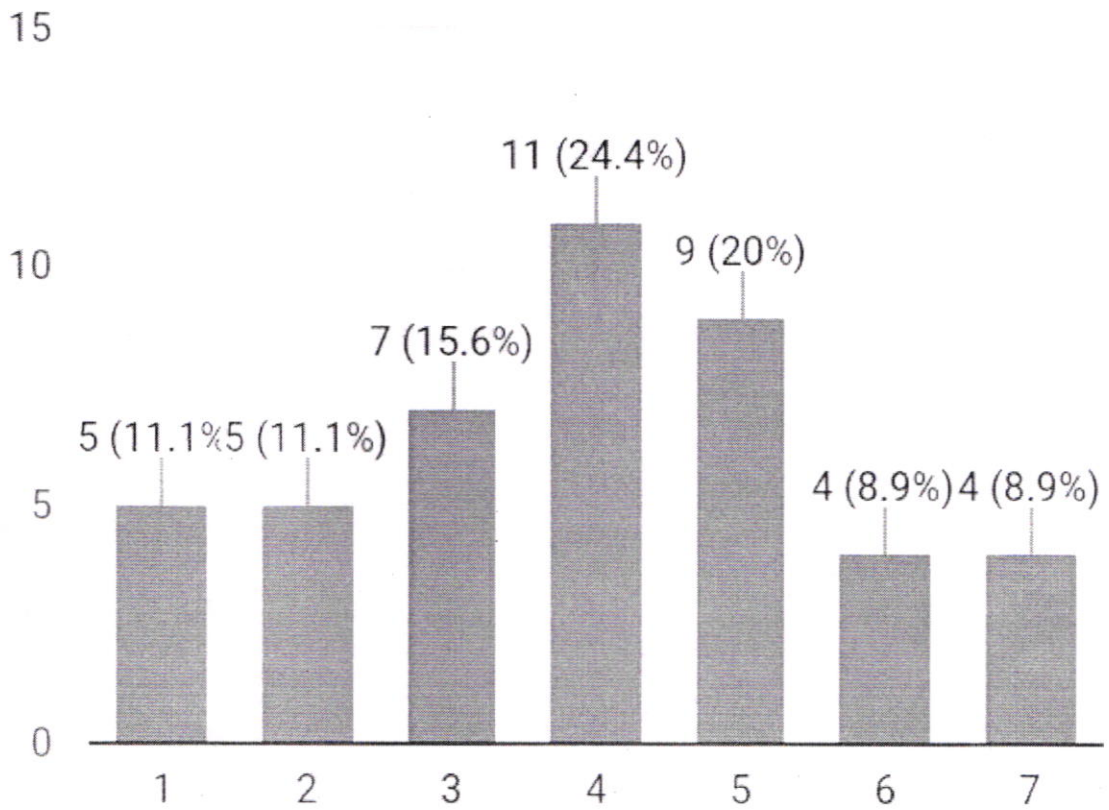
TENSE ----- RELAXED

45 responses



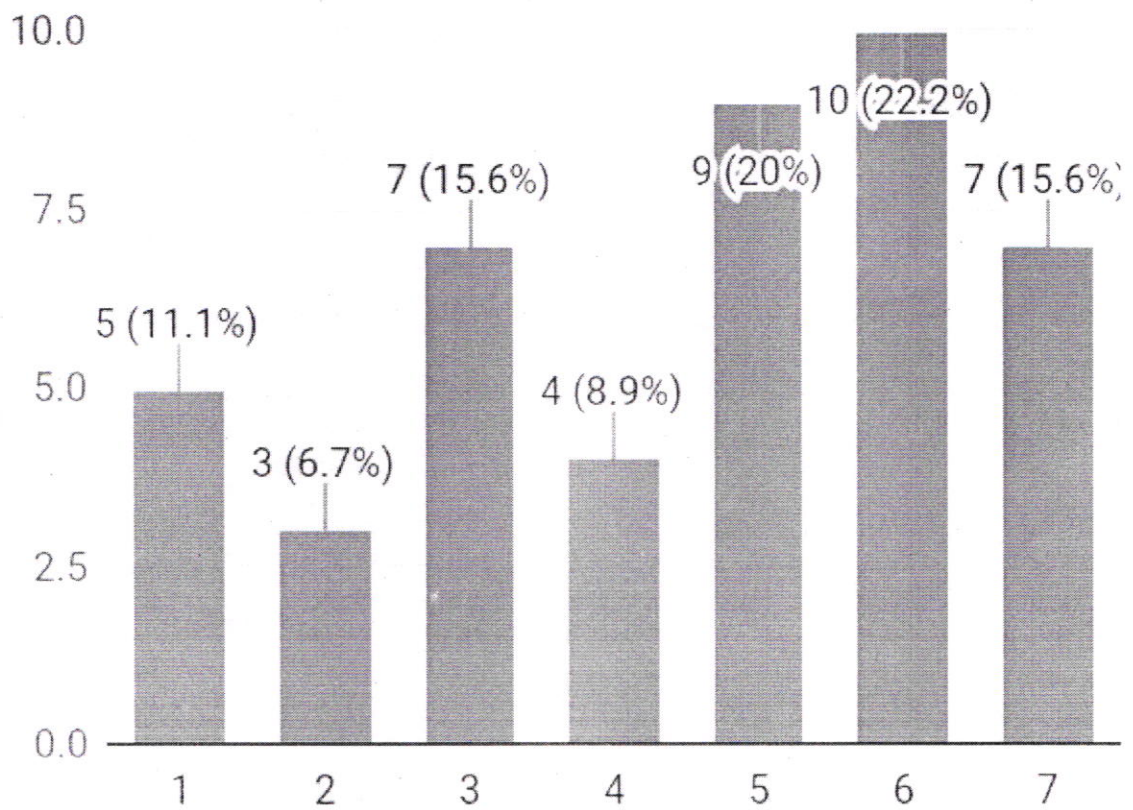
COLD ----- WARM

45 responses



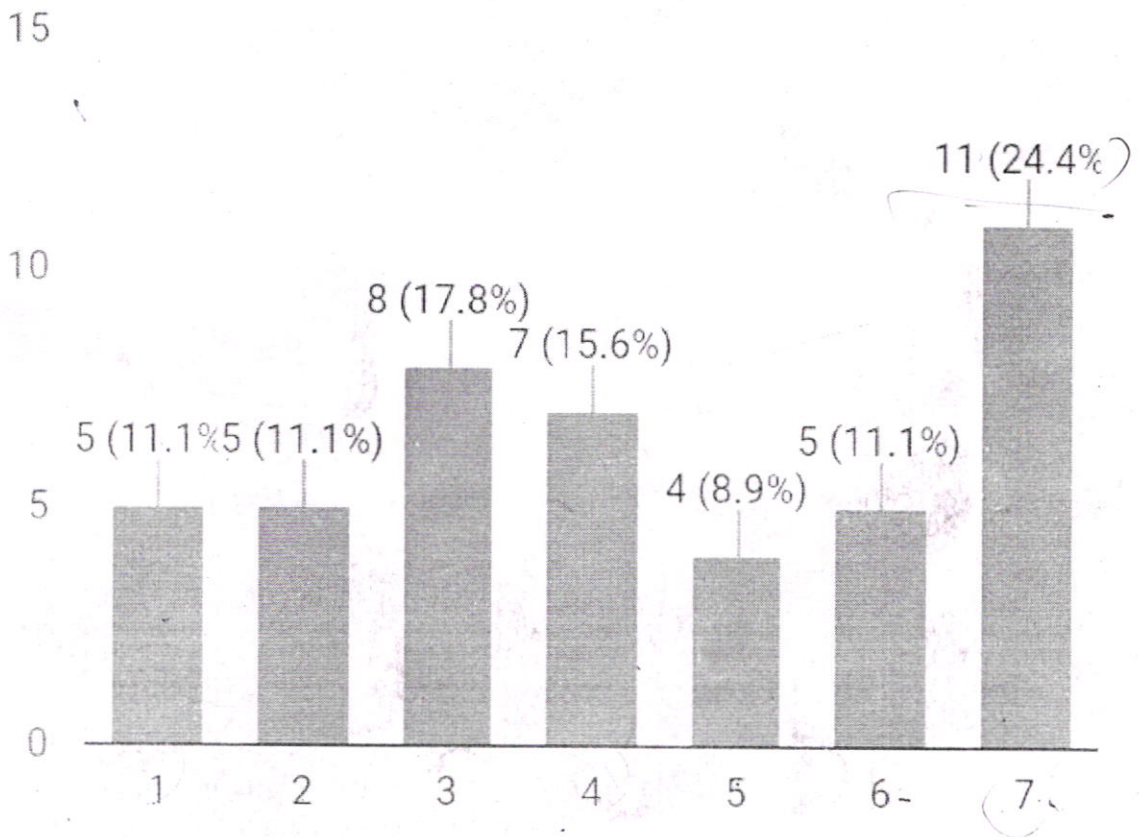
HOSTILE ----- SUPPORTIVE

45 responses



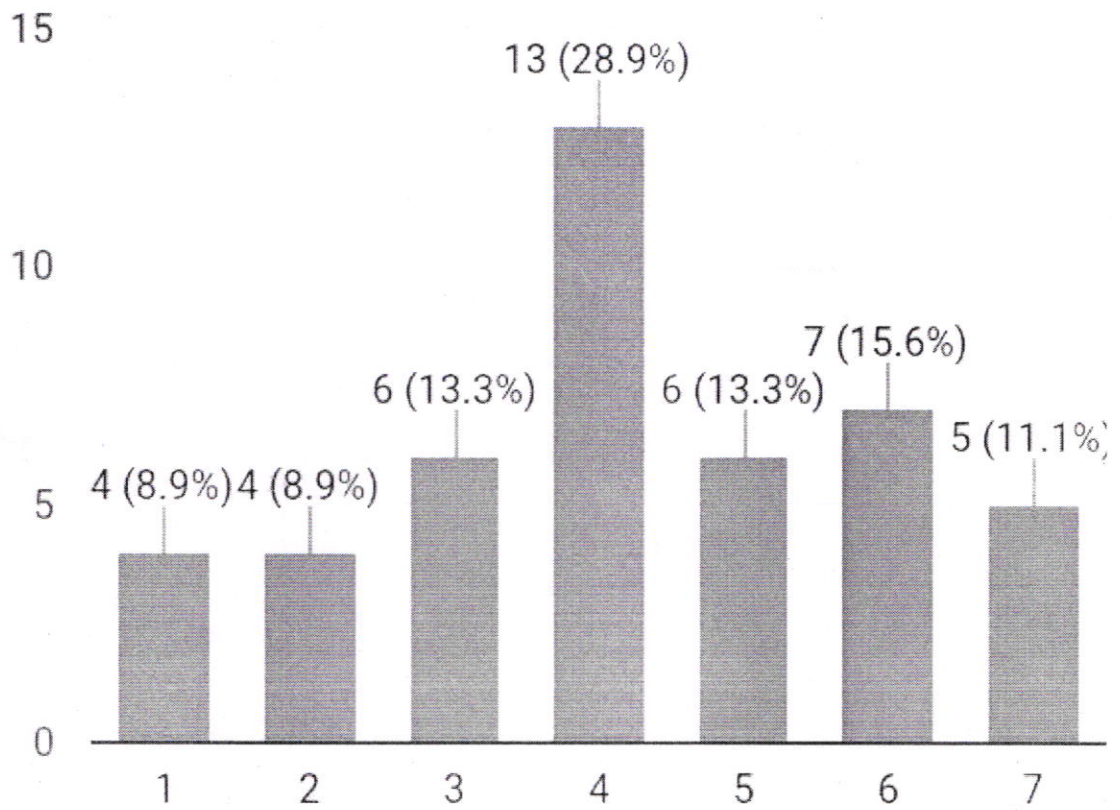
BORING ----- INTERESTING

45 responses



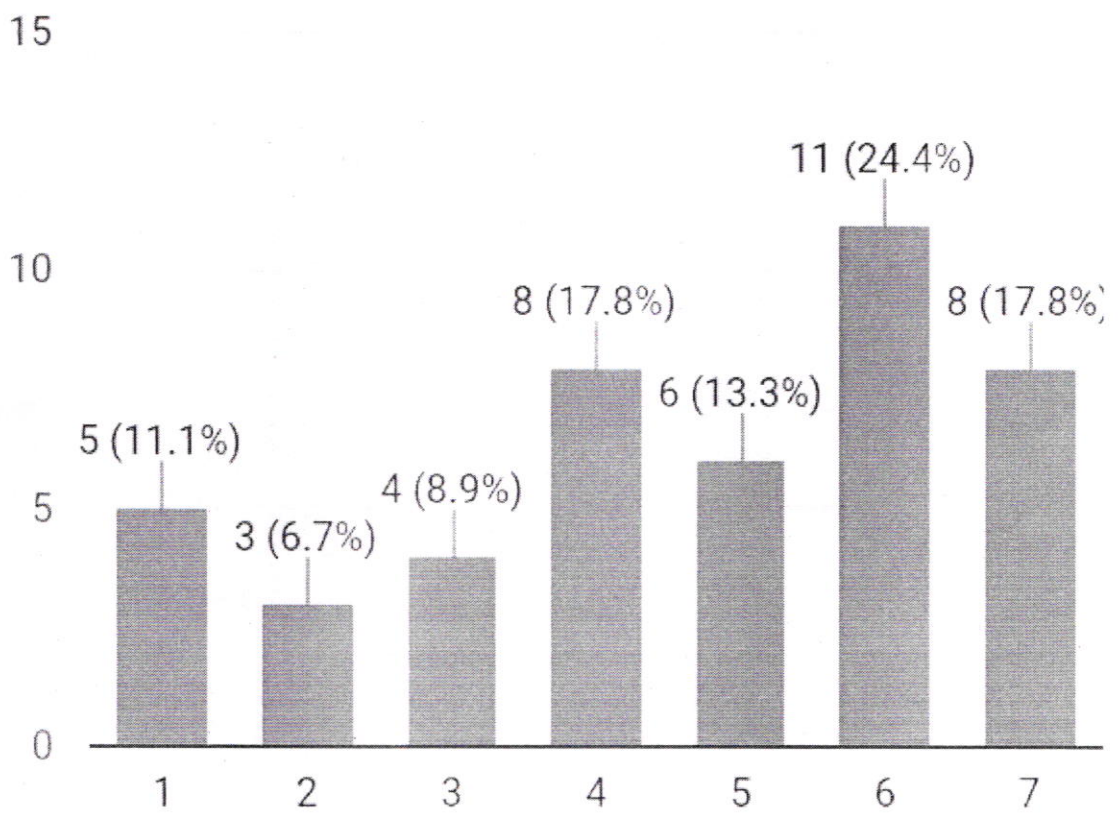
QUARRELSOME ----- HARMONIOUS

45 responses



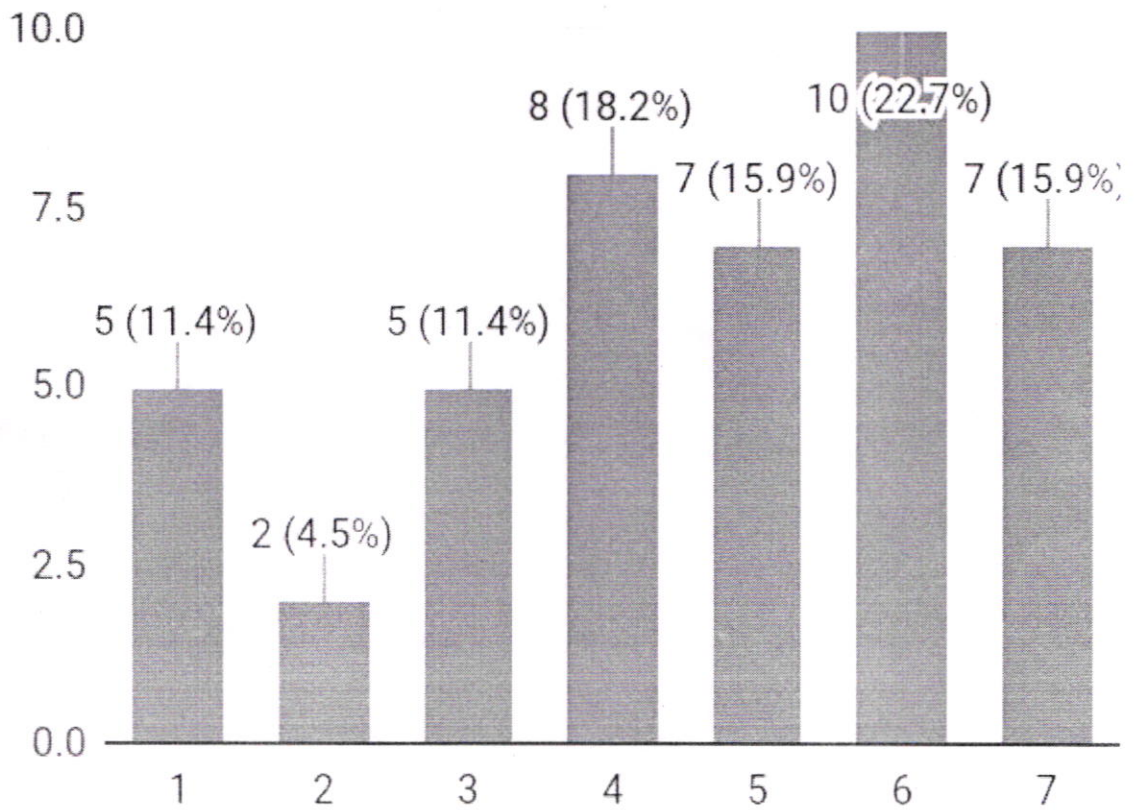
UNFRIENDLY ----- FRIENDLY

45 responses



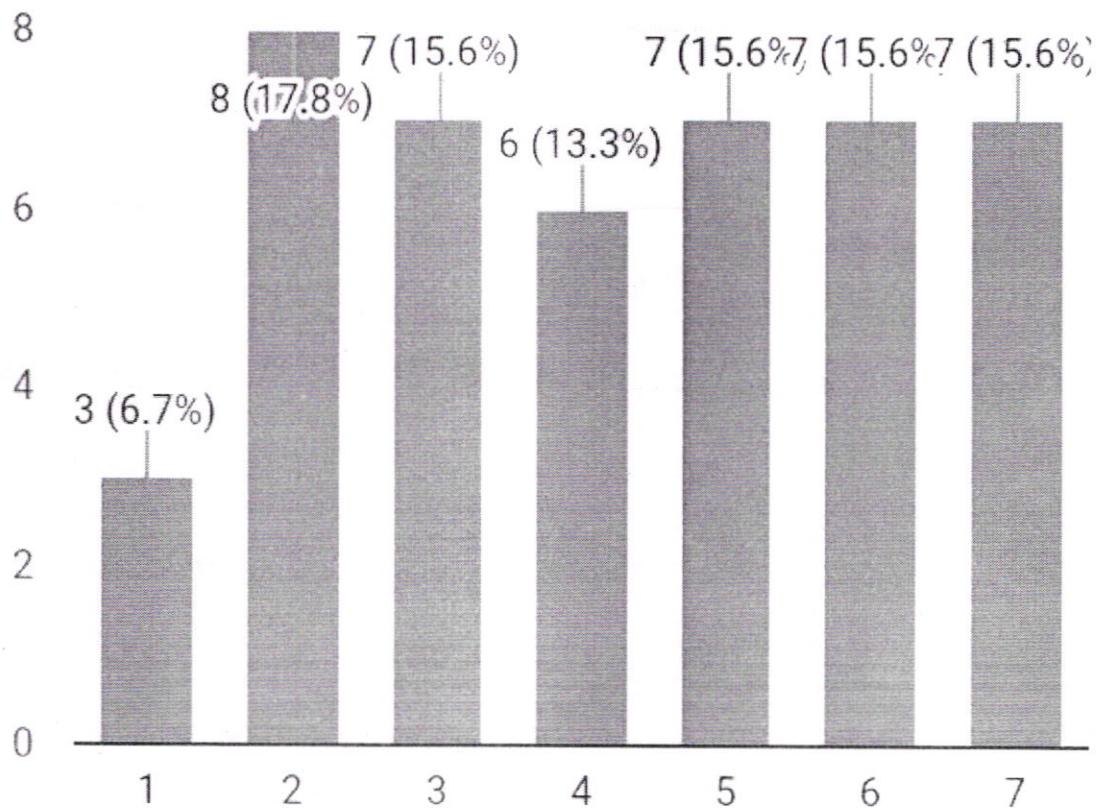
GLOOMY ----- CHEERFUL

44 responses



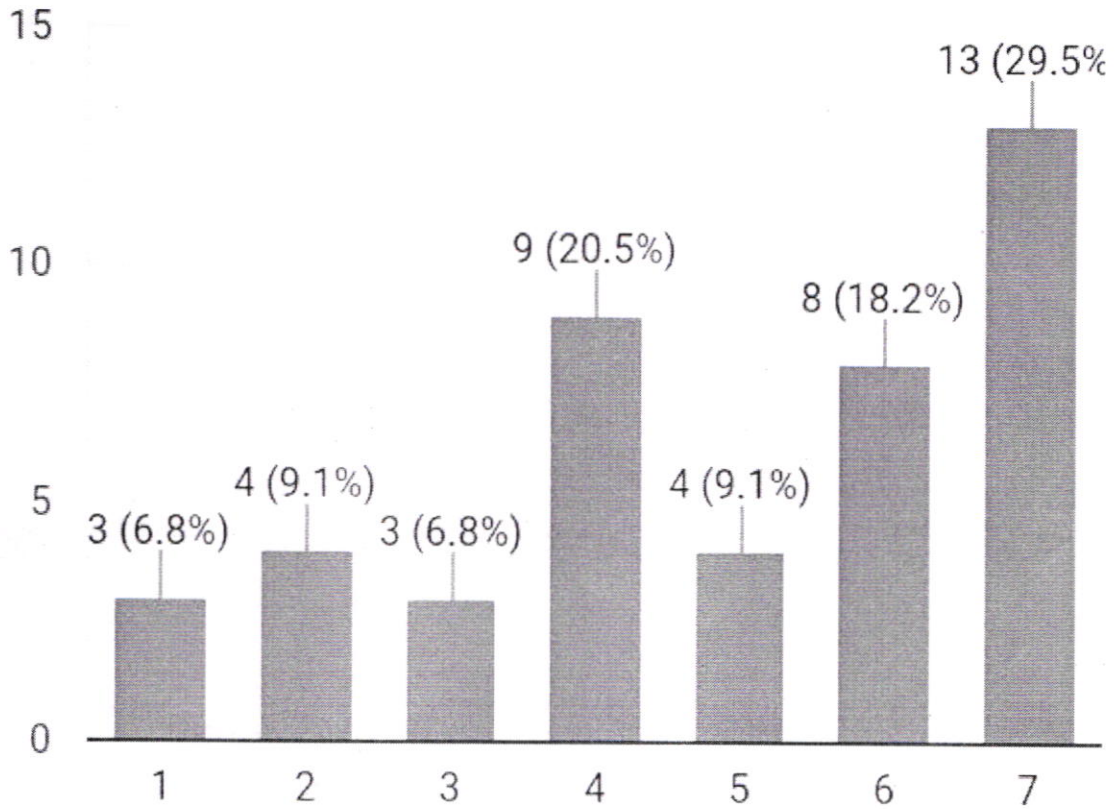
GUARDED ----- OPEN

45 responses



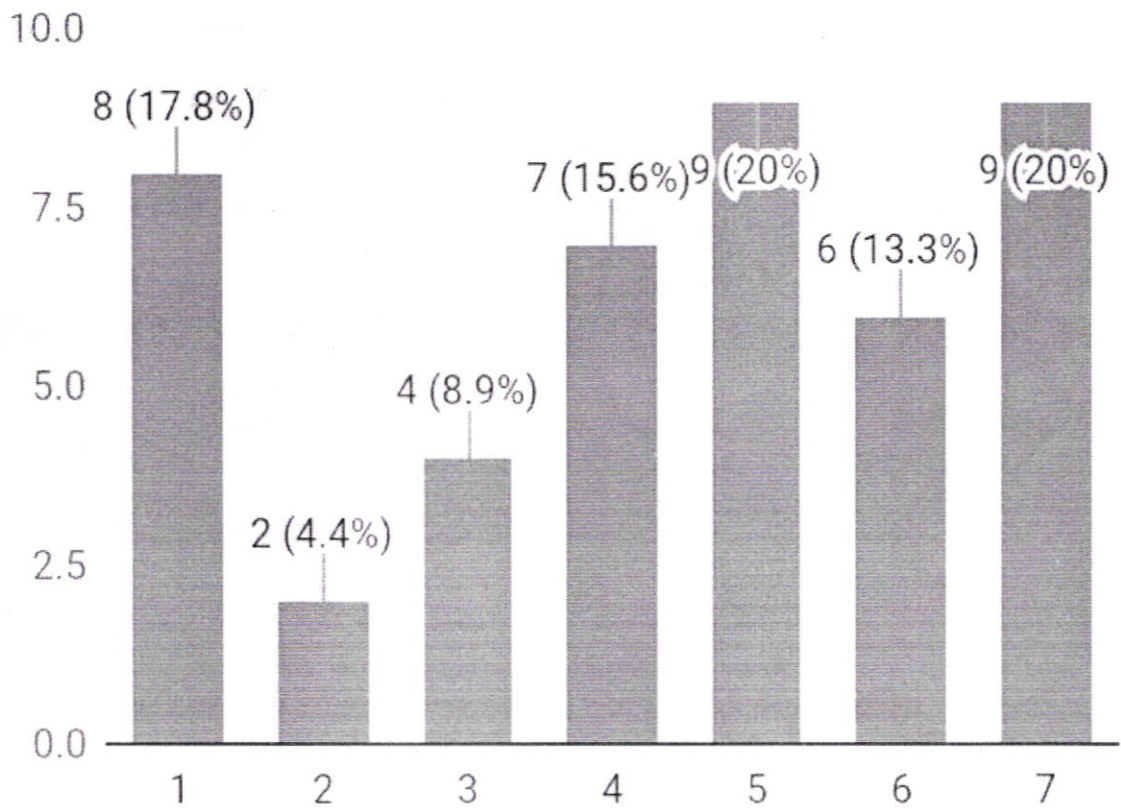
BACKBITING ----- LOYAL

44 responses



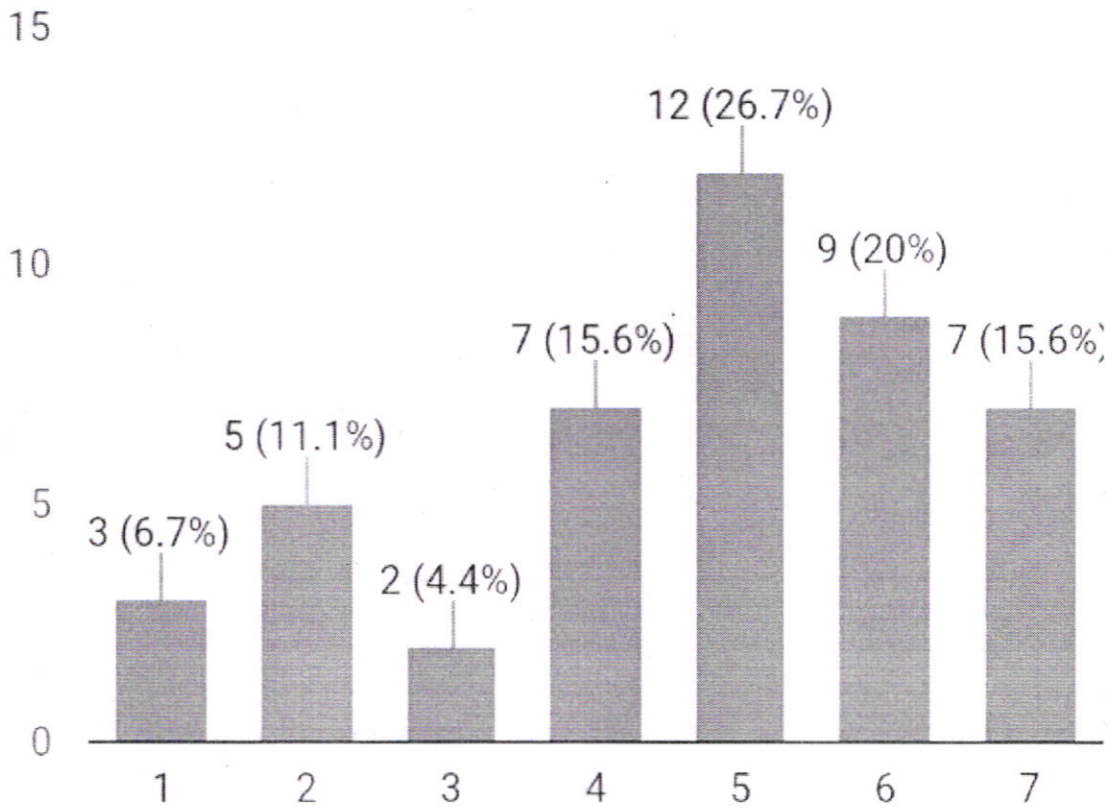
UNTRUSTWORTHY ----- WORTHY

45 responses



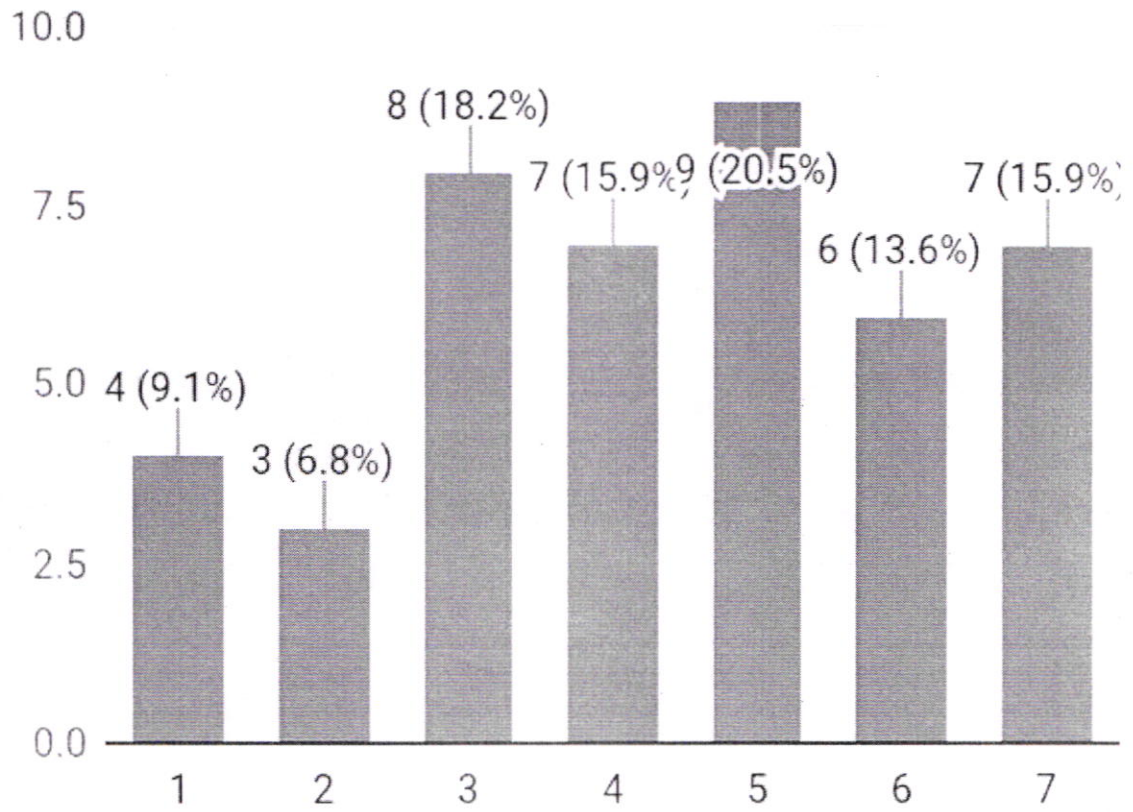
INCONSIDERATE ----- CONSIDERATE

45 responses



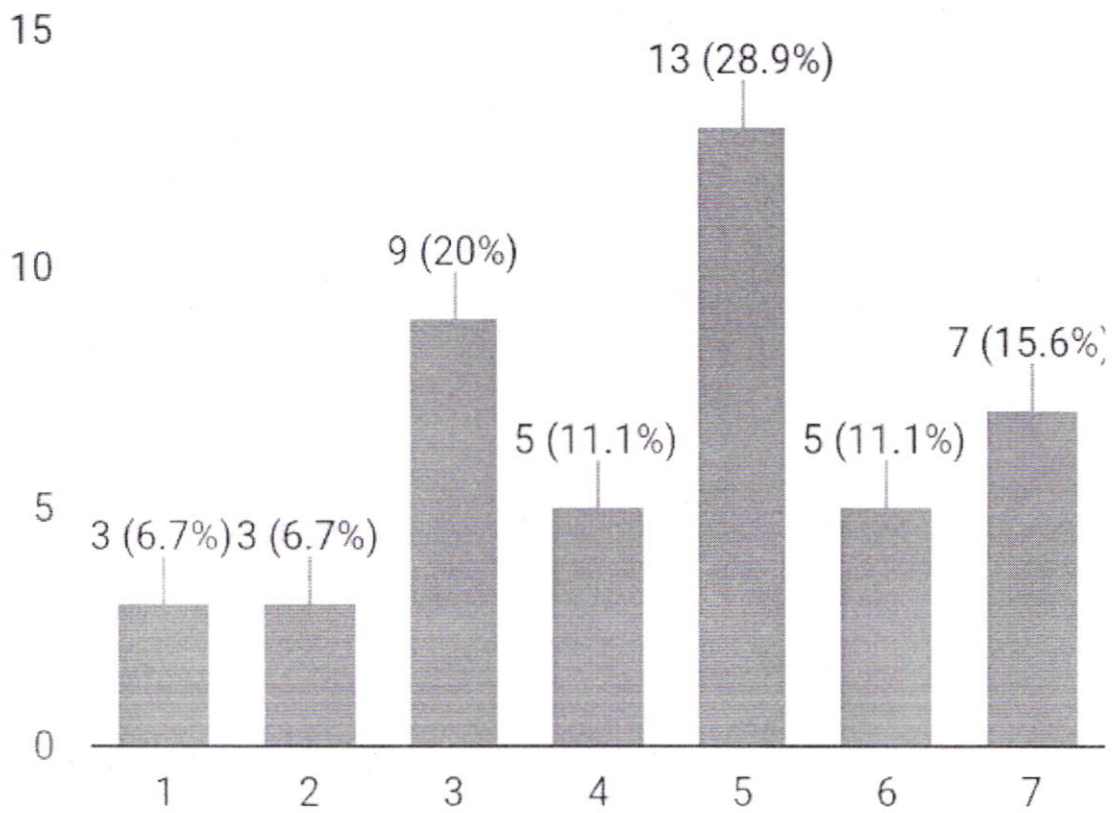
NASTY ----- NICE

44 responses



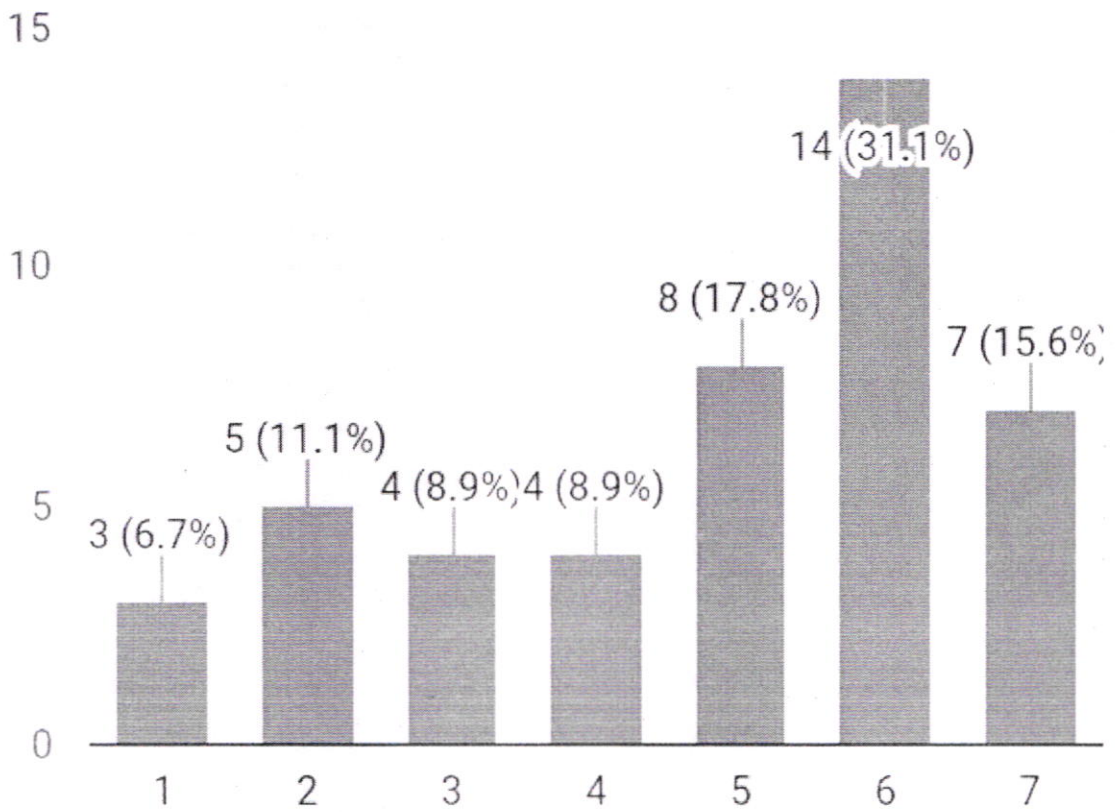
DISAGREEABLE ----- AGREEABLE

45 responses



INSINCERE ----- SINCERE

45 responses

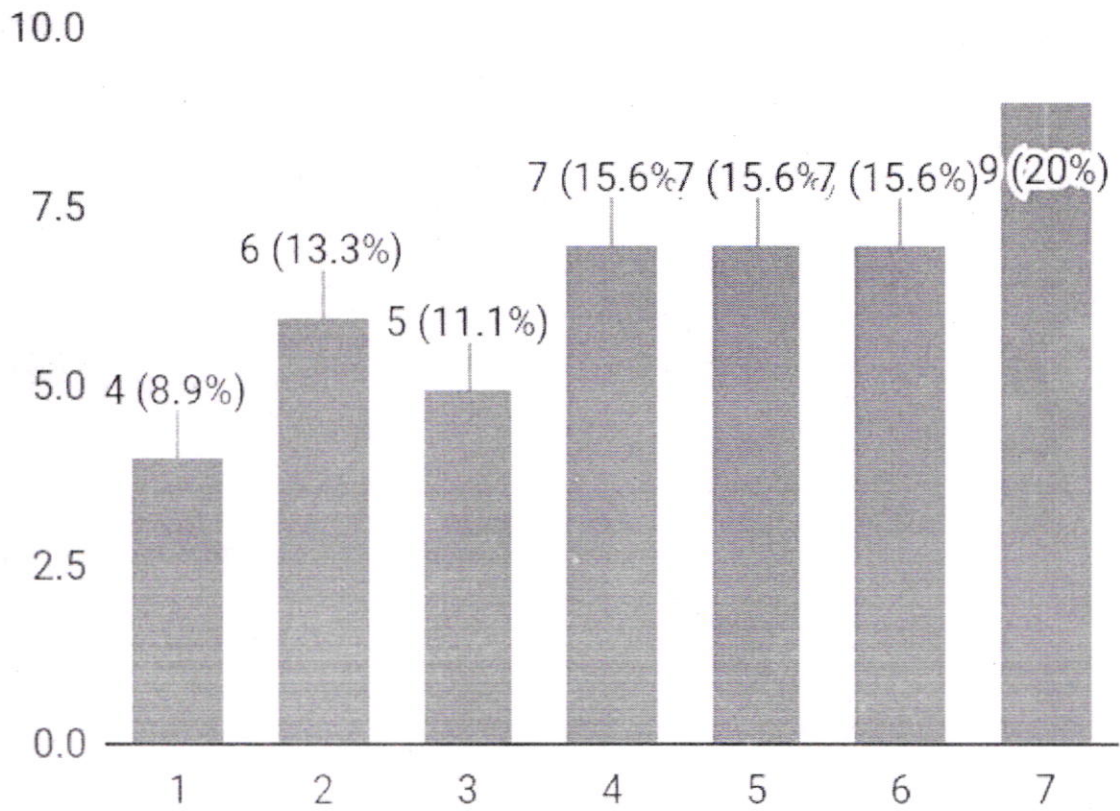


prosa olara

UNKIND ----- KIND

45 responses

... ke dua ... ke tiga ... ke empat ... ke lima ... ke enam ... ke tujuh ... ke delapan ... ke sembilan ... ke sepuluh ... ke sebelas ... ke duabelas ... ke tiga belas ... ke empat belas ... ke lima belas ... ke enam belas ... ke tujuh belas ... ke delapan belas ... ke sembilan belas ... ke dua puluh ... ke dua puluh satu ... ke dua puluh dua ... ke dua puluh tiga ... ke dua puluh empat ... ke dua puluh lima ... ke dua puluh enam ... ke dua puluh tujuh ... ke dua puluh delapan ... ke dua puluh sembilan ... ke tiga puluh ... ke tiga puluh satu ... ke tiga puluh dua ... ke tiga puluh tiga ... ke tiga puluh empat ... ke tiga puluh lima ... ke tiga puluh enam ... ke tiga puluh tujuh ... ke tiga puluh delapan ... ke tiga puluh sembilan ... ke四十 ... ke四十一 ... ke四十二 ... ke四十三 ... ke四十四 ... ke四十五



Conclusion:

By this, it is found out that out of 45 Respondents
28 Respondents are Relationship-oriented leader,
11 Respondents are Task-oriented leader.
06 Respondents are both Relationship and task-oriented
leader.